



## Radiator Mounting

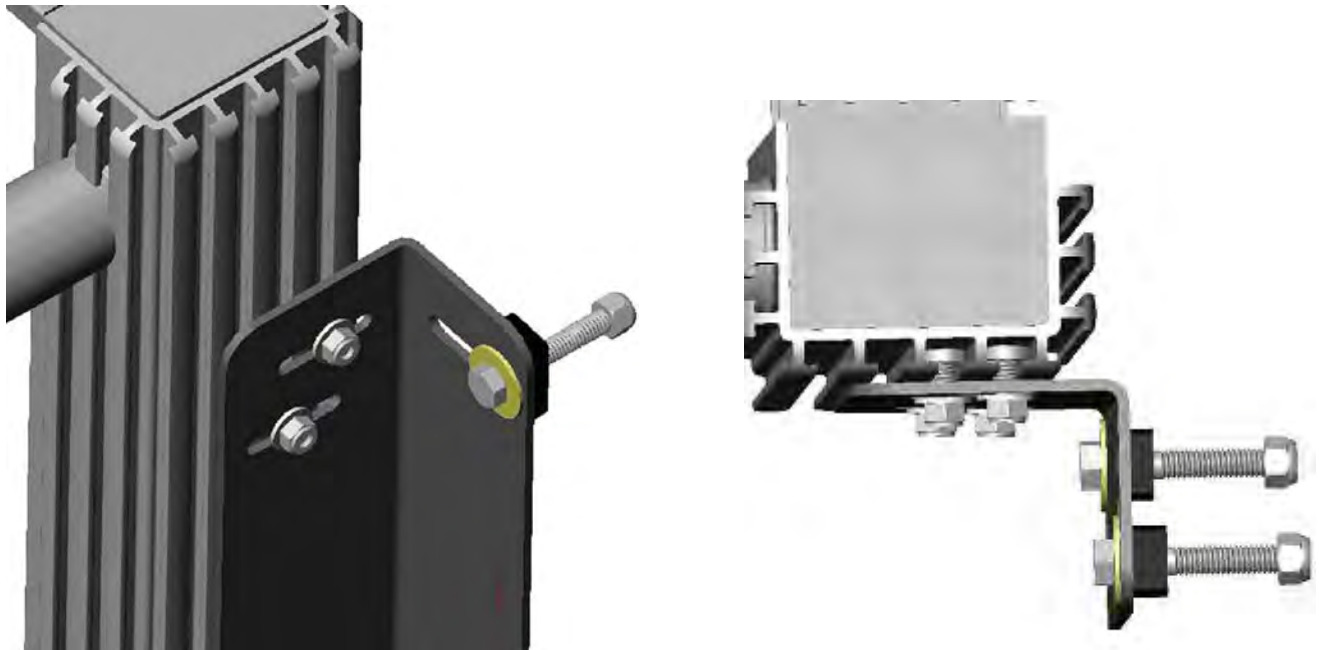
To avoid damaging radiator, it is **IMPORTANT** that you use the rubber spacers provide in this kit. These help to absorb shock and flexing of the vehicle chassis.

**Use rubber spacers between the bracket and the vehicle!!!**

### Proper order of radiator and bracket installation:

1. Mount brackets to end tanks. (Flex-a-fit radiators adapt to a wide variety of mounting location options)
2. Use radiator and bracket assy. to locate mounting points on vehicle.
3. Use OEM mounting locations *or* drill new mounting holes.
4. Secure radiator assy. to vehicle at predetermined location using provided rubber spacers.

### **Multiple mounting options shown**



**More mounting options next page:**

